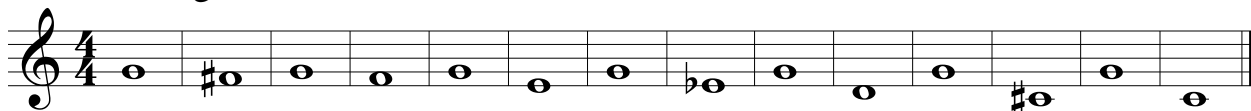


# Fundamental Warm-Ups for Band Level II

Christopher Ellis

## 1. F Long Tones

Clarinet in B $\flat$



## 2. Lip Slur #1

15

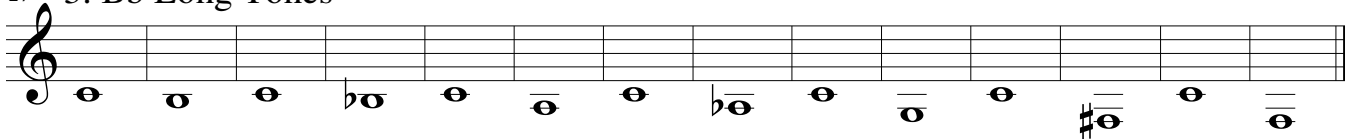


21



## 3. Bb Long Tones

27



## 4. Lip Slur #2

41



47



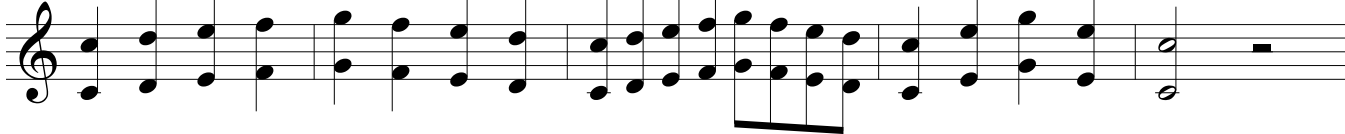
## 5. Articulation: 1x-Legato, 2x-Staccato

53



## 6. Technique

58



63



## 7. Major Scales

### 68 G Concert Scale (A)

Musical notation for the G Concert Scale (A) in G major. The scale is written in treble clef with a key signature of two sharps (F# and C#). It consists of two lines of music. The first line contains the ascending scale: G4, A4, B4, C5, D5, E5, F#5, G5. The second line contains the descending scale: G5, F#5, E5, D5, C5, B4, A4, G4. The piece concludes with a double bar line and a key signature change to A major (F# and C#).

### 75 C Concert Scale (D)

Musical notation for the C Concert Scale (D) in D major. The scale is written in treble clef with a key signature of two sharps (F# and C#). It consists of two lines of music. The first line contains the ascending scale: D4, E4, F#4, G4, A4, B4, C5, D5. The second line contains the descending scale: D5, C5, B4, A4, G4, F#4, E4, D4. The piece concludes with a double bar line and a key signature change to D major (F# and C#).

### 82 F Concert Scale (G)

Musical notation for the F Concert Scale (G) in G major. The scale is written in treble clef with a key signature of two sharps (F# and C#). It consists of two lines of music. The first line contains the ascending scale: G4, A4, B4, C5, D5, E5, F#5, G5. The second line contains the descending scale: G5, F#5, E5, D5, C5, B4, A4, G4. The piece concludes with a double bar line and a key signature change to G major (F# and C#).

### 89 Bb Concert Scale (C)

Musical notation for the Bb Concert Scale (C) in C major. The scale is written in treble clef with a key signature of one flat (Bb). It consists of two lines of music. The first line contains the ascending scale: C4, D4, E4, F4, G4, A4, Bb4, C5. The second line contains the descending scale: C5, Bb4, A4, G4, F4, E4, D4, C4. The piece concludes with a double bar line and a key signature change to C major (no sharps or flats).

### 96 Eb Concert Scale (F)

Musical notation for the Eb Concert Scale (F) in F major. The scale is written in treble clef with a key signature of one flat (Bb). It consists of two lines of music. The first line contains the ascending scale: F4, G4, A4, Bb4, C5, D5, E5, F5. The second line contains the descending scale: F5, E5, D5, C5, Bb4, A4, G4, F4. The piece concludes with a double bar line and a key signature change to F major (one flat).

### 103 Ab Concert Scale (Bb)

Musical notation for the Ab Concert Scale (Bb) in Bb major. The scale is written in treble clef with a key signature of two flats (Bb and Eb). It consists of two lines of music. The first line contains the ascending scale: Bb4, C5, D5, Eb5, F5, G5, Ab5, Bb5. The second line contains the descending scale: Bb5, Ab5, G5, F5, Eb5, D5, C5, Bb4. The piece concludes with a double bar line and a key signature change to Bb major (two flats).

### 110 Db Concert Scale (Eb)

Musical notation for the Db Concert Scale (Eb) in Eb major. The scale is written in treble clef with a key signature of three flats (Bb, Eb, and Ab). It consists of two lines of music. The first line contains the ascending scale: Eb4, F4, G4, Ab4, Bb4, C5, Db5, Eb5. The second line contains the descending scale: Eb5, Db5, C5, Bb4, Ab4, G4, F4, Eb4. The piece concludes with a double bar line and a key signature change to Eb major (three flats).

## 117 8. Bb Concert Chromatic Scale

Musical notation for the Bb Concert Chromatic Scale in Bb major. The scale is written in treble clef with a key signature of two flats (Bb and Eb). It consists of two lines of music. The first line contains the ascending chromatic scale: Bb4, B4, C4, C#4, D4, D#4, E4, E#4, F4, F#4, G4, G#4, A4, Ab4, A#4, Bb4. The second line contains the descending chromatic scale: Bb4, Bb4, Bb4, Bb4, Bb4, Bb4, Bb4, Bb4, Bb4, Bb4, Bb4, Bb4, Bb4, Bb4, Bb4, Bb4, Bb4, Bb4. The piece concludes with a double bar line and a key signature change to Bb major (two flats).

## 125 9. Dynamic Control

Musical notation for the Dynamic Control exercise. The first line of music shows a series of notes with dynamic markings: *p* (piano), *ff* (fortissimo), and *p* (piano). The notes are connected by a slur. The second line of music shows a series of notes with a *Sim.* (similissimo) marking, indicating a very soft dynamic. The notes are also connected by a slur. The piece concludes with a double bar line and a key signature change to G major (F# and C#).

136

Musical notation for the continuation of the Dynamic Control exercise. The first line of music shows a series of notes with a slur. The second line of music shows a series of notes with a slur. The piece concludes with a double bar line and a key signature change to G major (F# and C#).

10. Thirds (F, Bb, Eb, Ab Concert)

144

150

156

162

11. Bb Tuning Sequence

168

12. Bb Concert Scale Round

174

13. Chorale in G Minor

184

14. Chorale in Eb Major

192

200